



TEAR BOTTLES
& OTHER KEEPSAKES
PRODUCT CATALOG
WINTER-SPRING 2018

Copyright ©2004-2018 Timeless Traditions, Inc. All Rights Reserved.



MADE IN MONTANA

Tear Bottles have been a mourning tradition for three millennia. These keepsakes symbolize love, honor, sorrow and remembrance and treasure the memory of a loved one.



History & Tradition

Tear bottles by Timeless Traditions are **unique gifts for special occasions**. They are small, decorative bottles steeped in an ancient mourning tradition. As delicate as a teardrop itself, a tear bottle is a tradition of shared emotions and transformed relationships. Tear bottles can be used for real tears but are more often given as symbolic gifts to express shared feelings of love, sorrow, joy, forgiveness, and remembrance.



The tear bottle tradition has endured for nearly 3,000 years. During ancient Roman times, mourners captured their tears and buried them with loved ones to show affection and respect. Tear bottles may have taken inspiration from **the Bible**. In the Old Testament **Psalm 56:8 (KJV)**, David prays to God, “Thou tellest my wanderings, put Thou my tears in Thy bottle; are they not in Thy book?” David’s words remind us that God keeps a record of human pain and suffering and always remembers our sorrows.

Tear bottles reappeared during the 19th-century **Victorian Era**, when mourners collected their tears in long cylindrical vials or small bottles decorated with silver and pewter. Bereavement would end when the tears had evaporated, but the bottle remained as a token of eternal devotion.

Today, tear bottles are used to express many sentiments. They can represent tears of joy at a memory, hold tears of heartache upon the loss of a loved one, or keep ashes, a lock of hair, dried flowers, earth from a special place or some other memento of your loved one.

As a symbol of shared emotion, tear bottles are frequently given as gifts to honor and cherish another person. Many funeral directors report tear bottles are becoming a signature bereavement gift, because they are everlasting like the love they represent and help the family feel that their tears are understood and that their loved one’s memory will be cherished forever.

Timeless Traditions is pleased to offer their own unique tear bottles – all of which are approximately 2” high and are **made in the U.S.A.** Our Victorian, Roma and Artisan lines feature intricate lead-free metal filigree designs and our Contemporary flame-worked glass tear bottles are simply pure glass. We are proud to be the leading supplier of tear bottles in the USA.

What Others Say About Our Gifts

The Comfort Company has had the pleasure of doing business with Timeless Traditions for over a decade, and I can honestly say that, not only are the tear bottles among our bestselling gift items, but the customer service we receive is second to none. I can order with confidence knowing our stock will be shipped immediately and the product we receive is of excellent quality. Our customers love the tear bottles because of their sentimental and symbolic value. We love the tear bottles because they are one of our most successful product lines!

— Renee Wood, **The Comfort Company**—
Gifts of Hope for the Healing Heart—
Geneva, IL

We have had great interest in the Timeless Traditions products. We display them in our arrangement conference room for the families to consider at their leisure. The quality of the pieces and the price point make them very popular—the pendants sell themselves. And working with Jacqueline has been a pleasure. Whenever we need anything she is quick to get it to us.

Chris Remely, Owner,
Dokken-Nelson Funeral Service & Crematory, Bozeman, MT
Timeless Traditions, Inc. customer since 2001



TALL
MINI-DOME DISPLAY
ITEM# 6867

The Tear Bottles and keepsakes that Timeless Traditions provides bring unique merchandise choices to our customers. The quality and customer service we have encountered has been excellent.

Justin Luyben, **Evans-Brown Mortuary**, Sun City, CA
Timeless Traditions Customer since 2009

“I heard about tear bottles a few years ago while reading *Divine Secrets of the Ya-Ya Sisterhood*, which we (**All Girl Productions**) eventually acquired the feature film rights to produce. I actually gave a Timeless Traditions’ tear bottle to my best friend, whose sister-in-law had recently died of breast cancer, leaving behind several small children. **She phoned immediately after receiving the tear bottle and said, “This is the best gift I’ve ever received.”**”

— Yvette Taylor, formerly of Bette Midler’s All Girl Productions
and currently with Revelations Entertainment, Los Angeles, CA

The Victorian Tear Bottle™ Line

A filigree design of flowers and leaves wrap around these petite cobalt or clear glass bottles. Timeless Traditions' tear bottles are approximately 2" high. Available in the five finishes shown below (pewter, brass, silver, copper or gold) with an optional petite matching display tray . A short mini-dome also beautifully displays these bottles and keeps them dust and touch free.



The intertwining T's of the Timeless Traditions logo appear in the filigree on the base of each bottle. As our least expensive line of tear bottles, these Victorian tear bottles are quite affordable for most gift-givers and for those looking for heirloom quality cremanis keepsakes.



SILVER
(ON BLUE GLASS)
ITEM #2043
With Optional Mini-dome

New!
Red is the color of
Love! Christmas,
Valentine's Day,
Red Hearts,
Red Roses, and
NOW
Red Tear Bottles!



Item
#2050
Limited
Edition!

SILVER (ON RED GLASS) - Limited
Edition! Optional matching silver-
plated filigree 2" diameter tray.

To Order Call: 406-388-2900

The Roma Tear Bottle™ Line

The Roma line features two different styles to choose from – “banded” and “forget-me-not flower basket.” The caps of all tear bottles in the Roma line are crowned by genuine blue Austrian Swarovski® crystals. Each cap has a silicon plug, providing a tight seal. The graceful, intertwining T’s of the Timeless Traditions’ logo mark appear in the filigree on the underside of each base. Height: 2”. *Made in the U.S.A. with Lead-free metals.*



SILVER-BANDED
ITEM# 1008



GOLD-BANDED WITH TRAY
ITEM# 1015



PEWTER BASKET
ITEM# 1039



GOLD-BANDED
ITEM# 1053

Our ROMA style tear bottles look beautiful with the petite Solid-Rim Metal Trays, like the Silver Solid-Rim Tray pictured below.



To Order Call 406-388-2900

The Contemporary Tear Bottle™ Line



BLUE
ITEM# 4009



RED
ITEM# 4023



RED, WHITE & BLUE
ITEM# 4177

The Contemporary line features a high-end selection of individually, hand-made tear bottles. Splashes or swirls of colored glass decorate the bases. Hand-painted 24K gold luster adorns the neck of many bottles. The Blue #4009 has a navy quartz cabochon cap. The Red #4023 and the Lady Liberty #4177 both have a red quartz cabochon cap. The Amethyst Tear Bottle cap is made from a sodalite cab topped with a tiny grade A amethyst cabochon. The **new** Blue/Teal Swirl #4160 has a blue abalone cap. All caps in this style have hand-carved cork stoppers.



AMETHYST
ITEM# 4047

Please Note: Variations in color, paint, and shape are characteristic of the bottles' hand-made nature and are not to be considered defects.

Made in Montana
USA

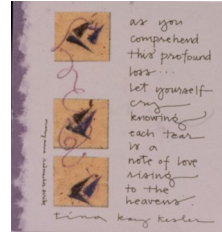
New! Blue/Teal Swirl



Contemporary Tear Bottles Continued



←Item# 4085
Pink Ribbon
Tear Bottle
& Card



Optional
Profound Loss
Grief Card
←

Our hand-blown “**Pink Ribbon Tear Bottle**” is a great addition to a comfort gift selection. Funeral Homes offering comfort gifts are finding this tear bottle to be a popular choice. This tear bottle comes with Gift Enclosure Card , a tear bottle story card and an organza gift bag. (Pink Ribbon Gift Card substituted on request.)

Pictured below are three high-end individually hand-blown glass tear bottles designed for a Mother’s Tears for her baby, but are often used as keepsake urns.

These Contemporary Tear Bottles have a swirl of colored glass (pink or blue or Yellow) in the tear-drop shaped bottle with a hand-painted 24K gold luster rim. The pink has a Rose Quartz stone cap, the blue has a Blue Lace Agate stone cap and the Yellow has a Yellow Cat’s Eye cabochon cap.

All of our contemporary hand-made tear bottles also have a hand-carved cork stopper to secure the cap, and many have a hand-painted 24K gold luster rim. Comes with a pink, blue or white organza gift bag and a tear bottle story card.

A Profound Loss Grief Card will be included with each Baby Tear Bottle purchase on request at no extra charge.



Baby Pink
(Item# 4061)

Baby Blue
(Item# 4078)



Yellow—For those who have suffered a miscarriage.; also represents support for our troops.; and is a mourning color in the Spanish culture

Item# 4092



Please Note: Variations in color, paint and shape are characteristic of the bottles’ hand-made nature and are not to be considered defects.

MARBLE CONTEMPORARY TEAR BOTTLES

MARBLE

These “Made in Montana” hand-blown glass tear bottles feature layers and swirls of colored glass and are perfect for concealing the keepsakes inside.

Golden-olive with Tiger Eye stone cap at right. Shades of blue with Navy Quartz cap at bottom left. Mourning shades of violet & plum with Purple Jade cap at bottom right.



Olive Marble Bottle—Item#4115

Hand-blown glass, Hand-painted 24K gold luster rim & Hand-carved cork stopper secures the quartz cabochon cap. Ivory Organza Gift Bag & Tear Bottle Story Card included with purchase. Optional Displays: Mirrors & mini-domes. Please Note: Variations in color, paint and shape are characteristic of the bottles' hand-made nature and are not to be considered defects.



Blue Marble Bottle—Item# 4108

Violet Marble Bottle—Item# 4122



BUTTERFLY CONTEMPORARY TEAR BOTTLES !



←Item#4153
Yellow
Butterfly



Item# 4146→
Orange
Butterfly

Made in Montana!

A delicate butterfly, featuring blue, yellow or orange wing-tips sits on a hand-blown glass tear bottle that has a smoky gray-green marble-style base with “beaded feet”. A navy blue quartz or yellow cat’s eye cabochon or rhyolite cabochon with a hand-carved cork stopper forms the cap.

The Butterfly symbolizes the story of transformation and rebirth – as the caterpillar transforms from its cocoon to beautiful Butterfly, so do we transform from our life here on earth, to life hereafter.



Item# 4139
Blue→
Butterfly

Item# 7017
← Mirror →

Item# 6935
3D”x4H”
Mini-dome
→



The Artisan Tear Bottle™ Line

Circle Of Love Tear Bottle™

Item# 3002—The sculpture surrounding this tear bottle is a celebration of the bonds that strengthen us. This tear bottle symbolizes the power of love that draws together family and friends in good times and bad and makes us stronger knowing we are surrounded by Love. **(Note: The brushed pewter people figures form a heart-shape as they hold hands around the tear bottle. An enameled red heart adorns the cap.)** Tear Bottle story card, organza gift bag and Circle of Friends gift card below included with purchase!



Circle of Friends Card <Cover>



Circle of Friends Card <Inside>

Legend of "The Circle of Friends":
TELLS THAT IF YOU GIVE A
CIRCLE OF FRIENDS TO A PERSON YOU
CARE FOR, YOUR BONDS OF FRIENDSHIP
WILL ENDURE FOREVER.

THIS TEAR BOTTLE IS A
CELEBRATION OF THE BONDS
THAT STRENGTHEN US.

IT SYMBOLIZES THE POWER
OF LOVE THAT DRAWS
TOGETHER FAMILY & FRIENDS
AND MAKES US STRONGER
KNOWING THAT WE ARE
SURROUNDED BY

Love

MAY IT LIFT YOUR HEART
AND REMIND YOU THAT
YOU ARE NOT ALONE.

Copyright © 2009 Timeless Traditions, Inc. All Rights Reserved.

This tear bottle is the perfect “thank you gift” for those who have been surrounded by the love and care of their family, friends, neighbors, clergy, hospice workers, and medical care givers during their difficult time of grief and loss. It says, “thank you for your care, assistance, prayers, love and friendship during this most difficult time in my life. I’ll never forget it.”

The Artisan Tear Bottle™ Line



Includes: Tear Bottle Story Card, Organza Gift Bag and Choice of Gift Card: (1) Profound Loss Card -see pg. 22- provides wonderful imagery of seeing the angels carry tears to heaven OR (2) Angel Encouragement Card -see here-reminds those in difficult circumstances they are not alone. Optional Displays: Mirrors, Trays, Mini-domes are extra.

This tear bottle features the same design on opposite sides of the tear-drop bottle. A serene face and a pair of grand upward sweeping angel wings on both sides with the wing-tips coming together near the top of the bottle. The cap compliments the design of the bottle with its intricate pattern. Perfect as a sympathy gift (with a Profound Loss card), or a gift of encouragement (with the Angel gift card.)

Angel Gift Card Text:

May the Love of your Angel,



INSIDE: softly enfold you, gently uplift you, comfort and hold you.

#3019



#3026



The Artisan Tear Bottle™ Line

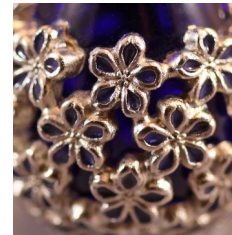
FORGET-ME-NOT TEAR BOTTLE™

These “Made in the USA” tear bottles come in two styles. The “Classic” has nickel-silver Forget-Me-Not flowers that wrap around the tear-drop shaped cobalt blue bottle. And, the more expensive “Colored” version is the same bottle but the **flowers are hand-painted** with clear-blue enamel.

Forget-Me-Not flowers symbolize faithfulness and enduring love; And are also commonly used to remember those that have died as a symbol that a loved one may be gone but not forgotten.



←Left –is the “Classic” Forget-Me-Not Tear Bottle™ (Item# 3040) featured on a silver solid rim metal tray.



Hand-painted flowers close-up—#3057



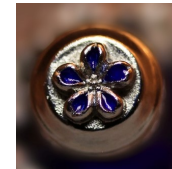
←“Colored” Forget-Me-Not Tear Bottle™ Item#3057
Optional Accessories:
Mini-dome & mini-mirror

Both the “Classic” & “Colored” Forget-Me-Not Tear Bottles include the gift card below:
Card Cover: Bottom Left

Card Inside: Bottom Right



THIS Forget-Me-Not Tear Bottle, like its namesake flower, symbolizes faithfulness and enduring love. It is a touching remembrance of a loved one who may be gone but never forgotten.



Top View of the hand-painted clear blue enamel Forget-Me-Not Flower on the cap of the tear bottle.

NEW! Winter 2018!

INFINITE LOVE TEAR BOTTLE™



Silver/Blue Item# 3064

Honor an everlasting love with our Infinite Love Tear Bottle™. Hearts and Infinity symbols are entwined and featured on both the bottle and the cap as a Remembrance of “a Love that has no End.” Available in 3 Finishes: 1) Silver-tone on blue glass as seen at left; Gold-tone on blue glass at bottom right; and 3) Gold-tone on clear glass.



← Gold/Clear Item# 3088

Gold/Blue Item# 3071

Inspirations of Love:

“Look after my heart, I’ve left it with you.”
Stephanie Meyer, Eclipse

“It’s better to have loved and lost, than never to have loved at all.” Tenneyson

“Love bears all things, believes all things, hopes all things, endures all things. Love never fails...” 1 Cor. 13:11

“I will never leave you or forsake you
(Deut 31:6)



Packages for Resale

Tear Bottle Packages – Quantity Discount Configurations

Package Contents Subject to Change Without Notice

Starter Package		Standard Package	
Designed for smaller shops, this pkg. includes a nice variety for your customers: 19 Tear Bottles & 5 introductory Trays.		Our most popular choice for shops and galleries looking to offer a sizeable selection for their customers. 30 Tear Bottles & 12 Trays.	
Item#	Quantity	Item#	Quantity
#1008	(1)	#1008	(2)
#1015	(1)	#1015	(2)
#1039	(1)	#1039	(3)
#1053	(1)	#1053	(2)
#2005	(1)	#2005	(2)
#2012	(1)	#2012	(2)
#2029	(2)	#2029	(3)
#2036	(1)	#2036	(2)
#2043	(3)	#2043	(4)
#2050	(1)	#3002	(3)
#3002	(2)	#3019	(1)
#3033	(1)	#3026&3033	(1/1)
#3040	(1)	#40XX	(2)
#4009	(1)	2" Assorted Trays	(12)
#4023	(1)	Note: BD-XX indicates that you may choose which colors you would like from the Contemporary Tear Bottle line. If you don't wish to specify, we'll be glad to select 2 for you. You may also specify your choice of trays, or we'll be happy to match them to your order for you.	
2" Assorted Trays	(5)	Totals: 30 Bottles & 12 Trays	
Note: You may specify the trays for your order, or we'll be happy to select them for you.			
DUPLICATES OF OUR BEST-SELLERS ARE IN THIS PACKAGE.			

The Starter Package includes : 19 organza bags, 19 story cards, 20 brochures, 1 CUSTOMIZED Point-Of-Purchase sign in a Plexiglas stanchion.

We strongly recommend that you secure your valuable inventory with a locking display case. We offer a variety of affordable cases that will beautifully display your inventory. See page 19

Children aren't usually present at the funeral planning meetings, and adults aren't often comfortable discussing the funeral, the body or cremains with them. However, children grieve the loss of the presence of their loved ones in their lives and children should be addressed when families make keepsake purchases. Tear Bottles are an ideal keepsake for older children. They are affordable for most families; And children are delighted by and attracted to their petite size and bright colors. The gift of a tear bottle also lets the child know that their tears over the loss of their loved one are understood and are okay, and that their tears honor the relationship. They can also be used to hold flower petals from the funeral or earth from a special place.

DON'T KNOW WHAT TO ORDER?

LET US HELP!

THE COMBINATION KEEPSAKE "STARTER PACKAGE"

If you love our products, and just don't have the time to decide exactly the mix of tear bottles and keepsake jewelry you want to order, you might want to consider our "Starter Package" of best-sellers.

Our Timeless Traditions staff will be glad to assist you in choosing a tear bottle and keepsake jewelry selection that meets your style or budget preferences. Just call or e-mail and we'll be happy to help!

Starter Package

Includes a nice variety for your customers:

7 Tear Bottles &Trays	and	7 Keepsake Necklaces & Dome	
Item#	Quantity	Item#	Quantity
#1008	(1)	#9240—Tear of Love	(1)
With tray/#6096	(1)	#9257—Infinite Love	(1)
#2029	(2)	#9226—Heart (2-tone)	(1)
With trays/#6072	(2)	#9247—Fancy Heart	(1)
#2043	(2)	#9219—Large Cross	(1)
With trays/#6041	(2)	#9059—Cylinder	(1)
#4009	(1)	#9264—Fish	(1)
With tray/#7000	(1)		
#4054	(1)	#6911—Satin Pewter Mini-Dome	
With mini-dome/#6874	(1)		

Bonus Gifts in your Starter Package Purchase Include:

2 Velvet Necklace Stands to display your keepsake jewelry

A plastic display stanchion with customized display signage

A CD-ROM of ads, text and images to help with marketing your new offerings

16 Customized Keepsake Brochures are included with purchase

Do you often have customers looking for a truly unique gift for someone who has helped them through their difficult time of loss. A gift that will deeply touch their heart and be treasured for a lifetime. We suggest:

For pastor appreciation: Life Of Christ Jewelry

For caregivers (hospice workers, medical staff, family, friends and neighbors who have helped through a difficult time of loss): The Circle of Love Tear Bottle (Page 10) comes with a gift card that conveys a special heartfelt thanks. But the varying price ranges of the tear bottles make them all an excellent recommendation for expressing thanks to the variety of helpers through a difficult time.

THE KEEPSAKE JEWELRY COLLECTION

(For ashes & other keepsakes - such as a lock of hair, dried flowers, or a prayer)



#9240

Tear of Love
(w/cutout Heart)

#9226

Being →
Discontinued



Heart
1 1/8" L X 3/4" W



#9219

Large Cross
7/8" L X 5/8" W



#9202

Cylinder
1 1/4" L X 3/16" W

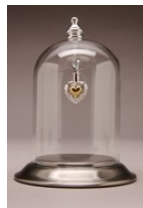


Backside view of Fancy Heart shows screw opening with allen-wrench opener. This type of opening is also on the heart above & the Butterfly.



#9257

Infinite Love
Bottom Screw
Opening



← 3"x4"H Mini-dome w/ Satin
Pewter Base & Hook for displaying
Keepsake Pendants
#6911



#9271

Fancy Heart

Specifications: All keepsake/ash holders are Rhodium plated sterling silver. The Heart Ash pendant has 14K yellow gold plating over a sterling center. The Cylinder Ash pendant has 14K yellow gold accent bands. All ash holder pendants come with a Rhodium plated sterling silver cable chain. (Black necklace chain also available.) Rhodium plating makes the Pendant and chain tarnish resistant. The ash holder pendants are packaged with a black velveteen bag, funnel, plastic spoon, pick and an inspirational poem and/or scripture verse in English & Spanish



KEEPSAKE COLLECTION CONTINUED

(For ashes & other keepsakes – such as a lock of hair, dried flowers, or a prayer)

#9295



Angel

Bottom Screw Opening



New! Teardrop wrapped in Love #9356

Bottom Screw

#9318



Plain Cross



New! Men's Cross #9349



Butterfly #9301

The Butterfly symbolizes the story of transformation ~ as the caterpillar transforms from its cocoon to beautiful Butterfly, so do we transform from our life here on earth, to life here after.



← 1 7/8" x 2 3/4" H Mini-dome with Walnut Wood Base & Brass Hook for displaying Keepsake Pendants—#6928

#9264



Fish

These pendants are used to hold keepsakes – such as ashes, a lock of hair, dried flowers, earth from a special place, or a prayer, making them ideal for families whether they choose cremation or burial.

Please note all Cross pendants, Tear of Love & the Cylinder open with a screw at the top chain loop. The Angel and Teardrop #9356 ash holder pendants open at the bottom of the pendants with a screw opening. The Hearts, Butterfly & Infinite Love pendants open with an allen screw as shown at left.

Trays—Metal & Mirror



MADE IN THE U.S.A.
With Lead-Free Metals

Metal Trays

Item #s: 6003 Brass Filigree Rim
#6010 Copper Filigree Rim
#6027 Pewter Filigree Rim/#6072 Pewter Solid Rim
#6034 Gold Filigree Rim/#6089 Gold Solid Rim
#6041 Silver Filigree Rim/#6096 Silver Solid Rim

Metal Trays

We offer a line of original trays to accompany our tear bottle lines. Metal trays (2" in diameter) are available in antique Brass & Copper (filigree rim only), Pewter, Gold, and Silver (in both filigree & solid rim). Both tray styles match the filigree design of flowers and leaves featured in our Victorian tear bottle design (*pictured upper left*). The solid-rim metal trays create a beautiful look with the Roma, Angel and Forget-Me-Not tear bottles too (see page 5, 11 & 12)!

Mirror Trays:

TOP—Item# 7024—1½" mini-mirror—fits inside mini-domes
MIDDLE—Item# 7000—2" beveled mirror inscribed with Psalm 56:8
BOTTOM—Item# 7017—2" beveled mirror—Plain OR can be custom engraved



Mirror Trays
reflect the
color & beauty
of the tear
bottles

Mirror Trays

We are also pleased to offer Mirror trays that enhance the presence of our tear bottles. The mirror trays are especially suited to beautifully reflect the colors in the Contemporary hand-blown tear bottles. The trays feature a beveled edge. They can be purchased plain (with no inscription) or with the phrase "Psalm 56:8" or with a custom engraving.



To Order Call: 406-388-2900

DISPLAYS

Showcases

Displaying your tear bottle selection in an attractive and secure manner is essential to high sales volume. We offer the following display case options to display and secure your tear bottle inventory.



New!

Item# 6775

Glass Showcase w/ full mirrored back. **Lockable!**

Dimensions:

14"H X 8"W X 8"D.

2 shelf/3 space.

Space between shelves: 4".

Opens in Back



NEW!

Option 2 Plexiglass

Item# 6768

This Plexiglass case can display all tear bottles, trays and jewelry we sell in one secure location.

LOCKABLE

Dimensions: 18"H x 9"W x 9"D.

2 shelf/3 space. Space between shelves: 6".



Tall

Mini-Dome Display

Dimensions:

3½"H x 1⅞"W

Item# 6867



Short

Mini-Dome Display



We also offer a small variety of display risers for your presentation of our products. Far left is the oval mirror riser, center is the 2-step riser and back is the Plexiglass riser which comes in a set of 3 (tiered)..

* For other display risers, please visit our website.

PERSONALIZE IT!



Mirror Engraving Options:

- 1) **One Line on Bottom or One Line on Top**—
Gold Filled, Maximum of 23 Characters & Spaces
- 2) **2 Lines Engraved, Top & Bottom**—
Gold Filled, Maximum of 20 Characters & Spaces per line

We request that you FAX or EMAIL your customer personalization to avoid costly errors and disappointing your customer.



The tear bottle cut-out can also be fitted with a hook in order to display keepsake jewelry.

MADE IN
MONTANA
U.S.A.

Temporarily
Out-of-Stock

The Timeless Traditions' Tear Bottle Keepsake Box—
Measures 11”Hx11”Wx3”D (Shown here in dark wood, light wood optional)
Matted for: a 5”x7” photo, any Timeless Traditions tear bottle and a 2¼”x3¾” cutout for a name & dates, or a favorite scripture or poem.
An optional brass plate is available to be engraved with a name & dates.

Keepsake Displays



Left—The SHORT mini-dome with walnut wood base (also featured on page 4 displaying a Victorian Tear Bottle) can be fitted with a brass hook and walnut wood knob in order to display keepsake jewelry.

DIMENSIONS: 1 $\frac{7}{8}$ "D x 2 $\frac{3}{4}$ "H /Item# 6928

Center—The TALL mini-dome with walnut wood base can also be fitted with brass hook and walnut wood knob in order to display keepsake jewelry.

DIMENSIONS: 1 $\frac{7}{8}$ "D x 3 $\frac{1}{2}$ "H/Item# 6867

Right—The largest of the three mini-domes comes with a satin pewter base and knob/hook for displaying keepsake pendants. This size mini-dome is also available with a wood base for display of the Butterfly Tear Bottles (see below).

DIMENSIONS: 3"Dx4"H/Item# 6911—with jewelry hook

Item# 6935→

3"Dx4"H

This size mini-dome displays the Butterflies



The 2" Mirror Trays and Tear Bottle Metal trays will fit inside this #6935 mini-dome!

OTHER PRODUCTS



Timeless Traditions is pleased to offer a striking piece of jewelry – the Life of Christ Cross™ from Iscript® – available as pendant or lapel pin. The centerpiece of the cross is the miraculous Enduring Word Tablet™ with the *entire* text of the King James New Testament inscribed on it in 24K gold. (The Tablet is nestled in the center of the Star of Bethlehem atop an elegant cross. Christ's life on earth is beautifully represented by symbols of both His nativity and crucifixion. Certified by Guinness World Records as the smallest Bible on earth.

Life of Christ Cross

Pin or Pendant

Item# Pin/ #9028

Item# Pendant #9035

These unique jewelry pieces also make ideal gifts for the clergy who assist in your planning & services.

Heartfelt Jewelry Collection

One of our newest offerings is a beautiful collection of jewelry – honoring loved ones. This offering meets our high standards of quality materials.



FRIENDSHIP HEART

Verse: "A friend loves at all times..."

Proverbs 17:17

Inspiration: The heart knows the unspoken language of friendship.

Grief Card Text:

"As you comprehend this profound loss, let yourself cry knowing each tear is a note of love rising to the heavens."

Specifications

- * Rhodium plated, sterling silver heart
- * 18" Rhodium plated, sterling silver cable chain
- * Pendant and chain are tarnish-free
- * Each pendant comes with the featured poem shown here
- * Optional windowed Gift boxes are available for gift packaging, a small additional charge will apply



SISTERS BY HEART

My life is so much richer, Even when we're apart. More than just a friend, You are my sister by heart.
Poem Excerpt © 2008 Birdoes

PRINT PRODUCTS



SYMPATHY CARD & PRINT

Profound Loss Print (8.5" x 11")

Item# 8014 Framed; #8021 Unframed

Profound Loss Enclosure Card

Item# 9004—2.25"x2.5" with envelope
Fits inside the tear bottle gift bag

Customer Spotlight: Schnider Funeral Home, Great Falls, MT



Keepsake Cabinet
in the Lobby of the
Schnider Funeral Home.

The following testimonial from Steve Schnider came from a phone conversation with Steve after a review of our records revealed how successful he was with our products, and we called to ask him why he felt he's had such long-standing success with our product lines.

“The **tear bottle** product line has been good for us, and has become a main part of our business. With cremation rates continuing to increase within the funeral industry, the tear bottles and cremation jewelry from Timeless way to increase our bottom line. These keepsakes are versatile in use and affordable for a broad range of our customers. Multiple purchases per family are the norm. The tear bottles are very personal and meaningful keepsake line that also has appeal to many of our customers because it's important to them that they are Made in the U.S.A.. We also feel that part of our success with sales of these keepsake products is the display cabinet in the lobby of our facility. Having a display in the lobby allows customers to think about a purchase in a casual way, while waiting for a service planning appointment, at a service reception or long after the service is over....when coming back to the lobby for a keepsake is far less daunting than returning to our resource display room for a keepsake they wish they'd have purchased while planning the funeral service.”

Steve Schnider, **Schnider Funeral Home**, Great Falls, MT
MFDA Past President (2005)
Timeless Traditions, Inc. customer since 2004

PAWS-ITIVE PET MEMORIES™



M
A
D
E

I
N

U
S
A!



**Paw Print Heart Keepsake Bottle
#7024 Mirror & #6867 Mini-dome**

**Our Keepsake Box is
Temporarily Out-of-Stock
Item# 6881**

The Timeless Traditions' Tear Bottle Keepsake Box— Measures 11”Hx11”Wx3”D (Matted for: a 5”x7” photo, any Timeless Traditions tear bottle and a 2¼”x3¾” cutout for a name & dates, or a favorite scripture or poem. An optional brass plate is available to be engraved with a name & dates.

Gift Card Inside Reads: →

May this Keepsake Bottle remind You of the champion that was far more than a pet. May it remind you of the family member, friend, and loving soul you'll never forget.

A great companion constant, loyal and true, the bottle shows the paw-prints you beloved pet left on you.

The bottle will hold keepsakes, such as tears shed for your loss, pet hair, ashes, earth from a special place you shared, dried flowers, or some other petite remembrance of your cherished companion.



Nickel-silver Hearts & Paw-Prints surround a cobalt blue teardrop bottle. Featured here on mini-mirror in Tall mini-dome. Holds keepsakes such as tears, pet hair or cremains, earth from a special place, etc. Comes with Gift Bag & Gift
← Card seen at left.

Item# 4306



PET MEMORIAL PRODUCTS



Antiqued Paw Print
Ash Pendant
Item# 9XXX

These pendants can hold keepsakes, such as pet hair, ashes, or earth from a special place to keep your memories of your beloved pet close to your heart.



Antiqued Bone in Circle
Ash Pendant
Item# 9332



Heart with Paw Prints →
Item# 9385



Circle of Paw Prints
Ash Pendant
Item #9325



Two-tone
Cylinder →
Ash Pendant
Item #9202



Paw Print
Cylinder

←#9391

Tear Of Love
→
Ash Pendant
Item# 9240



Specifications: All keepsake/ash holders are Rhodium plated sterling silver. The Cylinder Ash pendant has 14K yellow gold accent bands. All ash holder pendants come with a Rhodium plated sterling silver cable chain. (Black cord necklace chain also available.) Rhodium plating makes the Pendant and chain tarnish resistant. The ash holder pendants are packaged with a black velveteen bag storage bag, funnel, plastic spoon, pick and glue for sealing the pendant.

Timeless Traditions, Inc.

Other Important Information

You Will Receive the Following With Your Tear Bottles

- An elegant **Organza Gift Bag** with each tear bottle
- A **Miniature Story Card** with each bottle explaining the tear bottle history & tradition (to be placed inside the organza bag upon sale). You may choose the General version of the card or a Christian version (has several scripture references)
- A **Point-of-Purchase Sign** offering suggested gift-giving occasions and information about the tear bottle tradition (the sign comes with initial order)
- **Complimentary Color Tear Bottle Brochures CUSTOMIZED with your business contact information**
- With orders of \$300 or more, we include a **free Thumb drive with 2 professionally designed tear bottle ads** that can be placed on the obituary pages of your local newspaper. We offer product photos to those selling via the Internet, once you return our simple license agreement.



An organza gift bag & story card like those shown above come with each tear bottle you purchase.

Minimum Wholesale Orders & Payment Options

Our Minimum Opening Order is \$100. On your first 3 orders, we ask for pre-payment by business check or credit card. We accept Visa, MasterCard, Discover and American Express. On your 3rd re-order, you may fax us your Credit Sheet or complete our Credit Information Sheet and with satisfactory credit information, we'll extend Net 30 payment terms to your business.

NO RE-ORDER MINIMUMS.

Web Promotion

Timeless Traditions' wholesale web site www.timelesstraditionsgifts.com features a special retail information page called, "Retail Stores Near You". As a new retailer carrying our product, we automatically include you on this page, and a link to your website if you have one. If for some reason you don't wish to be listed, be sure to tell us. The intent of this page is to direct potential customers to your business. Tear bottle awareness is on the rise by Internet users!



ABOUT THE FOUNDERS & OWNERS

Several years ago, I read about a tear bottle being given as a gift of reconciliation from a daughter to her mother in a contemporary novel and then I went on a two-year search to find one for a friend. Nothing turned up, so with encouragement from my husband and friends, I decided to start designing and producing a line of tear bottles myself. I knew that the re-introduction of the tear bottle into contemporary culture was ultimately what I was destined to do – my company mission is to provide heirloom quality keepsakes that enhance, heal, and honor relationships just like that of the centuries-old tear bottle tradition.

Today, the company is flourishing as interest and awareness in the tear bottle tradition grows. I am amazed at the rich history we've discovered behind the tradition and the way in which contemporary gift-givers are connecting with this symbolic gift. We love to hear stories about how our tear bottles are helping others to honor relationships. Running a business that provides true value to others is a great reward. One of my favorite quotes comes from Washington Irving: "There is a sacredness in tears. They are not the mark of weakness, but of power. They speak more eloquently than ten thousand tongues. They are the messengers of overwhelming grief, of deep contrition, and of unspeakable love."

May someone cherish you enough to give you a Timeless Traditions tear bottle.

Jacqueline



Company Owner Jacqueline Bean with her husband Brad

Benefits of Carrying the Tear Bottle Gift Line



Our tear bottles & jewelry keepsakes are used for ashes, AND for various other mementos such as a lock of hair, dried flowers, earth from a special place, grains from the family farm, a prayer, etc. By carrying Timeless Traditions' tear bottles and other keepsakes, many funeral homes have been able to increase **their offerings to families whether they choose cremation or burial**. Offering keepsakes to families helps them meet an important emotional need – the ability to express themselves and to honor, cherish and reminisce about those they love with an heirloom quality remembrance. Our tear bottles & keepsake jewelry offer a loving and symbolic way to remember a loved one.

Our tear bottles are **Made in the USA**.

Funeral Homes are able to **differentiate themselves in the marketplace** because of our product's uniqueness and quality. The diversity of other uses for the tear bottles (as keepsake or portion urns, memory keepers, prayer vessels, thank you gifts for clergy, hospice workers, neighbors, family, friends, etc.) and their reasonable retail price points translate into **increased opportunities to serve a variety of customers** and help your businesses succeed. And their petite size makes them so easy to display and ship. Just think – you can serve a variety of customers, and their various needs—all this in just one square foot of counter space devoted to tear bottles. Please contact us with any questions or to place an order!



Pictured: Gold-banded Roma, Amethyst Contemporary & Silver Victorian Tear Bottles atop an Oval Mirror Riser (Item# 6829)

1627 W. Main St., #368
Bozeman, MT 59715
Phone: 406-388-2900

WEB: www.TimelessTraditionsGifts.com • Email: info@timelesstraditionsgifts.com